



ZETA TAU ALPHA  
St. Louis Alumnae Chapter  
c/o J. Maloney  
304 Elm Grove Ave.  
Hazelwood, MO 63042



### Collegiate Recruitment in Province XVII-A:

Alpha Psi (University of Missouri, Columbia, MO) 08/17-21  
Eta Theta (Mo. Univ. of Science & Technology, Rolla) 08/21-23  
Theta Kappa (Univ. of Missouri-St. Louis) 08/30-09/04  
Kappa Omega (St. Louis University) 09/02-06

Keep our collegiate sisters in mind during these busy days. If you have a collegian you would like to recommend, visit the new online Membership Information Sheet submission at [www.zetataualpha.org](http://www.zetataualpha.org)

We are currently looking for alumnae volunteers to form a Housing Association for the Eta Theta chapter house in Rolla. The Housing Association works as a liaison between the chapter (House Director, House Manager, General Advisor) and national officers (Province President, National Housing Corporation). Periodic visits to the chapter house may be needed to inspect the house, determine future projects, oversee repairs, and more. Working with collegians can be a very rewarding experience. Interested? Contact Meg Naes for more information: [megnaes@hotmail.com](mailto:megnaes@hotmail.com) or 314-341-9498.

Be sure to visit the St. Louis Alumnae Chapter website often at [www.stlouiszta.org](http://www.stlouiszta.org). Did you know that you can:

- view the calendar of events for the year
- RSVP online for events
- download copies of recipes from our recipe exchange
- view pictures from past events
- submit your membership information
- pay your dues all on our website!

Check it out regularly for new information and photos. If you have ideas for information or items you would like to see posted, contact Meg Naes at [megnaes@hotmail.com](mailto:megnaes@hotmail.com).  
Thanks!

Meg O'Connell Naes

### Join the fun as a ZTA Fundraiser Fanatic!

We have exciting events every year to raise money for ZTA. I am inviting you to join the fun and make our events successful! We are setting up a committee (ZTA Fundraiser Fanatics) who will help with several events September through May.

By signing up to be a *Fundraiser Fanatic* you are agreeing to volunteer. You may be asked to send out letters for raffle items, help set up at Super Spa Sunday and other requests as they are needed throughout the year.

I will send out communication to the committee about our needs for each event. Joining the Fundraiser Fanatics is great way to get involved in the alumnae chapter. Fundraising can be a rewarding experience!

Please contact Becky Harlow to be a ZTA Fundraiser Fanatic or with questions. [beckyharlow@aol.com](mailto:beckyharlow@aol.com), or phone 314 838-2580.

Fundraising events include:  
Plant Sale in spring  
Gift wrapping, Nov-Dec  
Raffle at May Banquet  
Super Spa Sunday, February



Bowling with the collegians



Apple picking at Eckerts

*You are invited to join your ZTA alumnae sisters at the 1st meeting for 2009-2010*



## *Wine and Cheese party*

(meet your ZTA sisters, and make a wine glass charm)

**Tuesday, September 8, 7-9pm**

Home of Kris Fleming  
1312 Susanaire Circle  
St. Louis, MO 63146

RSVP preferred, 314/434-6149 Kris

Directions: From I-270 take exit 14: Olive Blvd/State Hwy 340.

Follow signs for MO-340 West/ Olive Blvd. Right at Timber Run Dr. Left at Markaire Dr. Left at Susanaire Circle. House is on the left #1312

# *the* CROWNING *touch*

ZETA TAU ALPHA FRATERNITY  
SAINT LOUIS ALUMNAE CHAPTER  
[stl-zta@yahoogroups.com](mailto:stl-zta@yahoogroups.com)  
August 2009

Visit our website at [www.stlouiszta.org](http://www.stlouiszta.org) for more news, photos and events.

### NEED YOUR SUBMISSIONS!

ZTA sisters are for Life, and we want to share the joys, sorrows, accomplishments in your life. Send us births, marriage, anniversary, birthday, job promotions, honors, etc. Email them to: [jamilymaloney@yahoo.com](mailto:jamilymaloney@yahoo.com) for posting in the next newsletter. You can email pictures, too.

Need a ride or someone to ride with?

Call one of the officers listed on the next page & we'll help arrange carpools.



**ZETA TAU ALPHA**  
ST. LOUIS ALUMNAE CHAPTER  
2009-2010 Officers & Committee Chairs

**PRESIDENT**  
Danielle Miller 314-265-9026  
Eta Theta - M S&T daniellezta@hotmail.com

**VICE PRESIDENT - PROGRAMMING**  
Stephanie Buffa 314-542-7118  
Eta Theta - M S&T buffazta@hotmail.com

**VICE PRESIDENT - MEMBERSHIP**  
Brooke Loyd 314-322-8818  
Gamma Delta - Ole Miss brookeloyd@att.net

**VICE PRESIDENT - FUNDRAISING**  
Becky Harlow 314-838-2580  
Alpha Psi - MU beckyharlow@aol.com

**SECRETARY**  
Jamily Maloney 314-680-7915  
Theta Kappa jamilymaloney@yahoo.com

**TREASURER**  
Stacie Rapp Gentry 314-973-5293  
Eta Phi - ISU slgentry@cbs.com

**HISTORIAN / REPORTER**  
Kari Troyer Frank 314-221-2416  
Eta Theta - M S&T karimfrank@gmail.com

**PANHELLENIC DELEGATE**  
Mary Pitiangas 314-285-5173  
Mu - Drury babygrand46@sbcglobal.net

**RITUAL CHAIRMAN**  
Adriana "Adro" Hughey 573-356-6939  
Theta Kappa - UMSL aeagle84@yahoo.com

**ALUMNAE-COLLEGIATE RELATIONS**  
Amanda Westerhaus 618-610-2000  
Theta Kappa anw7c9@umsl.edu

**SERVICE/ THINK PINK CHAIRMAN**  
Kristen Meyer 314-413-9244  
Theta Kappa yurface711@sbcglobal.net

**RACE FOR THE CURE CO-CHAIRS**  
Janet Vigen-Levy 314-852-3496  
Mu - Drury janamvi@mindspring.com

Sandy Simmons 314-541-4995  
Alpha Psi - MU skszeta@sbcglobal.net

Geri Macauley 314-960-6911  
Alpha Psi - MU gerimac74@charter.net

**PLANT SALE**  
Jill Meyer 314-313-3520  
Alpha Psi - MU jillmeyer@prodigy.net

**GIFT WRAPPING**  
Claudia Stagg 314-698-9042  
Alpha Psi - MU restagg@att.net

**ALUMNAE WEBSITE**  
Meg Naes 314-854-9241  
Theta Kappa - UMSL megnaes@hotmail.com

## ZTA Sisterhood has Something For Everyone

Hey, YOU! Yes, you, the awesome Zeta woman reading this newsletter! Have you been a member of the St. Louis ZTA Alumnae Chapter in the past? Have you moved to the St. Louis area recently or are you a recent college graduate? Have you been in the area for a while and always thought about getting involved but never found the time to make it to a meeting? If you answered yes to any of the questions above then this is your year to join!

**Why this year?** Because we've been working extra hard to ensure that we have events and activities planned so that there's something for everyone. Are Tuesday nights bad for you? No problem! We've spiced things up a bit this year and rather than having each meeting on the 2nd Tuesday of each month, we're alternating different nights of the week. Are you completely unavailable on weeknights? Don't worry about it! We'll be incorporating different interest groups that will meet outside of regular meetings and be focused on the activities that matter most to our members. (More info will be coming soon!) Are you looking for a way to get more involved but don't currently have a position? Join the Fundraiser Fanatics and help us to achieve our goal of donating \$2000 to the ZTA Foundation this year!

Of course, this is all in addition to the other great events you'll find outlined in our calendar on the next page. Remember that in order to take advantage of all the alumnae chapter has to offer, we need your support as a dues paying member. Please consider joining even if you've never been a member, haven't been involved in a while, or can't make it to regular meetings. We hope you'll find this year that we truly have something for everyone, especially YOU!

Zeta Love,  
Danielle Miller  
Chapter President

## Zeta is for LIFE - JOIN YOUR ALUMNAE CHAPTER

Yearly dues are only \$35 and just \$30 for recent graduates! Includes a FREE subscription to Conde Nast Traveler magazine!!  
\$15 Operating Fee sent to the National Fraternity  
\$2 Sent to National Fraternity and used for scholarships  
\$2 St. Louis Panhellenic Association Dues  
\$16 Our local chapter operating fees

You can pay dues using PayPal! Details can be found at [www.stlouiszta.org/](http://www.stlouiszta.org/) membership. (there is an extra \$2.50 charge for this convenience) Don't wait! Or mail your membership form using the envelope enclosed with this newsletter! It's going to be a great year. Join us today!

## Save Yoplait lids

ZTA participates in Yoplait's Save Lids to Save Lives Campaign. Look for the pink lids on packages of Yoplait yogurt... save them, wash them, and turn them in at our meetings. For each lid we collect, Yoplait donates money to Susan G. Komen for the Cure AND the ZTA Foundation. For more info, contact Kristen Meyer 314-413-9244 or [yurface711@sbcglobal.net](mailto:yurface711@sbcglobal.net)

## KOMEN ST. LOUIS RACE FOR THE CURE

Thank you to all who volunteered before and during the 11th annual Komen St. Louis Race for the Cure! With more than 66,000 participants, including 4,800 breast cancer survivors, the Race was a big success. You are invited to be a part of the 2010 Race! Contact Janet Vigen Levy, [janamvi@mindspring.com](mailto:janamvi@mindspring.com) to see how you can help.



**August**  
Aug. 21-23  
Missouri University of Science and Technology (MST) Formal recruitment. For carpool info, contact Amanda Westerhaus, 618-610-2000 or [anw7c9@umsl.edu](mailto:anw7c9@umsl.edu)

Aug 30 - Sept. 4  
UMSL Recruitment (Theta Kappa)

**September**  
Sept 2-6  
SLU Recruitment (Kappa Omega)

Tues, Sept 8  
7-9pm  
WINE & CHEESE KICKOFF  
Home of Kris Fleming, 1312 Susanaire Circle, 63146  
See newsletter cover for more info.

**October**  
Thurs, Oct. 15  
7-9pm  
FOUNDER'S DAY  
Location: UMSL/SLU (tbd)

Our sisters from Kappa Omega at SLU and Theta Kappa at UMSL will be invited to join us in this annual celebration.

Sun. Oct. 11

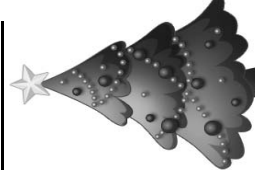
THINK PINK with the RAMS  
ZTAs handout pink ribbons for breast cancer awareness donations prior to noon game against the Vikings. Free tickets to enjoy the game afterwards with your ZTA sisters.

**November**  
Mon, Nov 9



"EAT DRINK AND BE WELL"  
Learn about total wellness ZTA style  
Home of Mary Pitiangas  
303 Ridge Trail Dr, Chesterfield, MO  
Eat, drink-- but healthy

**December**  
Tues, Dec 8  
7-9pm



*Christmas Party*  
Home of Sue Davis  
550 May Valley Dr, Fenton, MO  
\$10-\$15 gift for friendly game  
of "Rob your ZTA Sister"

**January**  
Wed, Jan 13

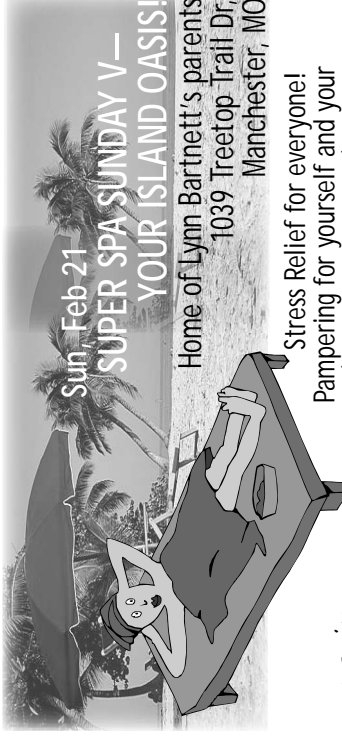


"THANK DOG IT'S WEDNESDAY"  
Join us for a Happy hour to benefit the St. Louis Humane Society  
RT Weilers, 201 North Main St, St. Charles  
Bring donation for Humane Society

**February**  
Tues, Feb. 9

HEART HEALTHY RECIPE EXCHANGE & SAMPLING  
Home of Geri Macauley  
4598 Braungate Dr., 63128  
Bring a heart healthy food (and the recipe) to share with your ZTA sisters. Any type will do-- snacks, appetizers or desserts.

## CALENDAR OF EVENTS, 2009-2010



Sun, Feb 21  
**SUPER SPA SUNDAY V—  
YOUR ISLAND OASIS!**  
Home of Lynn Barnett's parents  
1039 Treetop Trail Dr,  
Manchester, MO

*manicure*  
*pedicure*  
*reflexology*  
*massage*  
*more!*

Stress Relief for everyone!  
Pampering for yourself and your friends (males welcome, too). Join us for this favorite FUNdraiser. Enjoy a manicure, pedicure, a relaxing massage and more.

Lynn's mom, Carole, will once again be our hostess. A "pampering" menu will be emailed closer to the date. RSVP to Lynn at [zta101@yahoo.com](mailto:zta101@yahoo.com) or 314-426-6658.

**March**  
Mon, March 8

"GREEN BUNCO" (St. Pat's and Bunco)  
Home of Janet King  
1822 Sumter Ridge Ct.,  
Chesterfield,  
Never tried Bunco?  
Here's your chance  
to learn, and maybe  
win a prize! Wear your green for St. Patrick's Day.

**April**  
Thurs, April 1

Due date for plant orders. Send to Jill Meyer,  
136 Foxtail Dr, St. Charles, MO 63303

Tues, April 13

Paint Me Pottery, location tbd

**May**  
Tues, May 11

May Banquet and Raffle, location tbd



Don't miss out - watch our website for updated information! [www.stlouiszta.org](http://www.stlouiszta.org)

For more information, and to RSVP for meetings and events: contact the event hostess,  
or Stephanie Buffa 573-647-1120, [buffazta@hotmail.com](mailto:buffazta@hotmail.com)